



INFORMATION  
BROCHURE



MEDICAL  
NURSING  
EDUCATION  
ENGINEERING  
MANAGEMENT



**YAMUNA**  
GROUP OF INSTITUTIONS





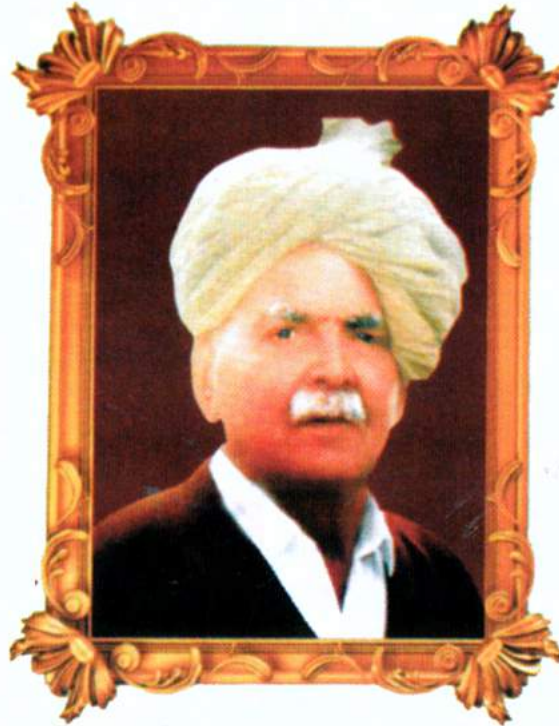


## CONTENTS

Chairman's Message	2.
CEO Message	3.
Academicians & Researchers of Knowledge	4.
Yamuna Group of Institutions	5.
Courses	6.
Approvals & Affiliations	7.
Departments - Yamuna Institute of Engg. & Tech.	8. - 13.
Departments - MBA & BBA	14. - 15.
Yamuna Polytechnic for Engineering	16.
Departments - Yamuna Polytechnic for Engineering	17. - 18.
Yamuna Institute of Education	19.
Yamuna Institute of Dental Sciences & Research	20. - 21.
Yamuna Institute of Nursing	22. - 23.
Facilities	24. - 25.
CLR Multispecialty Hospital & North East Students	26.
Shooting and NCC	27.
Physical Education & Sports	28.
Cultural Life	29.
Training & Placement	30. - 31.
Course-wise Admission	32. - 35.
Yamuna in News	36.
Fee Structure	37.



## FOUNDER



**Late Sh. Choudhary Lekh Raj Ji  
(1910 - 1995)**

A noble and pure soul, patron of good repute, Ch. Lekh Raj was considered the messiah for the habitants of Gadholi rural community. His concern for the people renowned him the well wisher of the society. In support to wellbeing of civilization a vision of accession of professional education in engineering, medical and management was set up. And with the hold up of family members towards his vision an educational and charitable trust named by Ch. Lekh Raj Ji has come into operations.

## CHAIRMAN'S MESSAGE



**Ch. Rajinder Kumar**

Chairman of Ch. Lekh Raj Educational  
& Charitable Trust

A trust operates as the Group named Yamuna Group of Institutions which is embedded with Yamuna Institute of Engineering and Technology (YIET) imparting with the course of M.Tech within Mechanical, Computer Science, Electronics & Communication and Electrical Engineering, B.Tech into Mechanical, Electronics & Communications, Computer Science, Civil and Electrical Engineering. Management studies through BBA & MBA programmes specialization with Human Resource, Marketing, Finance, International Business and Information Technology. Yamuna Polytechnic for Engineers (YPE) contained by Computer Science, Mechanical, Electronics & Communication, Civil & Electrical, and Automobile Engineering. Medical sciences education by institutions named Yamuna Institute of Dental Science and Research (YIDSR), Yamuna Institute of Nursing (YIN) and Yamuna Institute of Education (YIE). In addition trust is running a 120 bedded Ch. Lekh Raj Multispecialty General Hospital.

We enable students to achieve desired learning outcomes through individual attention and varied approaches to teaching. Our programs and courses are designed for students from all backgrounds in an effort to help them achieve academic and career success. The majority of students have come from outside the state, giving us a unique understanding of the needs of interstate students. We offer a multicultural environment, and an infrastructure geared towards the needs of students. At Institution we take care of our students needs right up to Level 7 of National Qualification Framework, with guaranteed places to students who pass each stage of their educational career. Our excellent links with Industry ensure that our students are guaranteed places on professional courses or industrial placements after graduating with us. Once students have graduated, we keep in touch through our Alumni Association, in order to inform them of the latest employment opportunities and to encourage networking between individuals.



## C.E.O. MESSAGE



***Ch. Arjun Singh Johal  
CEO YGI***

Higher education is the touchstone by which the progress of a nation is measured in today's times. As the country stands poised on the brink of an exciting future, higher education is as important as administrative policy. Today, the society, the academia and the industry need to stand together and share their commitment, enthusiasm and expertise in order to create a responsible, progressive and skilled citizenry. In keeping with this very spirit, YGI has been focusing on providing all-round, relevant and comprehensive education to students for the last 13 years in an environment that impresses upon ethics, values and mutual respect.

Whenever I am asked to define education, the following quote always comes to my mind "The whole purpose of education is to turn mirrors into windows". Education is the fountainhead of growth, progress and development in any part of the world. Its contribution has been responsible for upliftment of the society, in shaping the moral fiber of the student community and contributing to the nation's well-being by producing the bright minds of tomorrow. We at YGI have structured an effective and holistic education system in a way that prepares the students to be an effective and efficient workforce and make the best use of the opportunities that the industry sends their way. The curricula of the various colleges under the YGI Trust are designed to keep pace with the ever evolving and dynamic trends and challenges of the industry today.

The courses offered by our colleges not only enable the students to develop a gamut of skills but also apply them to real-world problems, thus fast-tracking their careers. The processes of teaching, training and evaluation follow the modern Gurukul system which makes the education system at YGI in sync the latest trends in technology and commerce. Education, thus, rather than being lecture oriented, didactic and traditional, is more student-driven.

Wishing you all the very best in all times to come.



# Academicians & Researchers of Knowledge

## DIRECTOR GENERAL



**Dr. S.R. Mediratta, Director General**

Dr. S.R. Mediratta is a Professor & Director General of Yamuna Group of Institutions. He is B.Tech., PG Diploma & Ph.D. He has more than 48 years of experience in Research, Academics and Industry. He has presented 175 papers at National & International Conferences and his 54 papers have been published in National and 13 papers in International journals. He has won several awards including National Metallurgist Award from Ministry of Steel for outstanding contributions in product development; Vasvik Industrial Research Award for outstanding contributions in Material Science & Engineering; Distinguished Alumnus Award from IIT, Bombay, Jewel of India Award by Indian Solidarity Council, New Delhi and Rashtriya Vidya Gaurav Gold Medal Award by International Institute of Education & Management, Best Citizen of India Award by India Publishing House, Lifetime Achievement Award, by Governor of Punjab & Administrator Union Territory, Chandigarh and Noble Son of India's Award for outstanding contributions in profession and technical education. He has guided several Ph.D and M.Tech Thesis.



**DR. SHUSHANT GARG**

Prof. & Principal  
Yamuna Institute of Dental  
Sciences & Research  
BDS, MDS



**Dr. Ramesh Nain**  
Principal & Director (Admissions)  
Yamuna Institute of Engineering  
& Technology  
Phd., M.Tech. (Mech.)



**Prof. Mahendra Kumar Yadav**  
Principal  
Yamuna Institute of Nursing  
M.Sc. Nursing (Paediatrics)  
M.A. (Sociology)



**ER. NIRMALJEET SINGH**  
Principal  
Yamuna Polytechnic for Engineering  
B.E., M.I.B., M.Tech.



**Dr. Neelam Dhamija**  
Principal  
Yamuna Institute of Education  
M.A., M.Ed., M.Phil. & Ph.D.- Edu.



# Yamuna Group of Institutions

Yamuna Group of Institutions under the aegis of Ch. Lekh Raj Educational & Charitable Trust was established in 2008 with a vision to make the Group a Centre of Excellence for Technology, Medical & Other areas in order to produce professionals imbued with a spirit of Innovation and Research leading to development of individual and the Country.

Yamuna Group of Institutions is extended over an area of more than 30 Acres with Lush Green Campus in a quiet, peaceful and pollution free environment at Village Gadholi, which is situated at National Highway #73 connecting Yamuna Nagar – Jagadhri with Chandigarh. It is well connected to major towns in the state of Haryana as well as other towns of the country. The nearest Railway station is about 20 Kms away at Jagadhri and the nearest airport is 120 Kms away at Chandigarh.

## *At present group is running*

**Yamuna Institute of Dental Sciences & Research (YIDSR),  
Yamuna Institute of Engineering & Technology (YIET),  
Yamuna Polytechnic for Engineering (YPE),  
Yamuna Institute of Nursing (YIN) &  
Yamuna Institute of Education (YIE).**

The campus of Yamuna Group of Institutions is surrounded by the sprawling greenery, far from the hustle & bustle of the city, yet housed in beautiful buildings equipped with all modern amenities. The Yamuna Group has become synonymous to value based, job oriented, dental, professional and technical education. The institutions have embarked upon the path of preparing Doctors, Engineers, Teachers and Managers of global standard through imparting an education that not only prepares them for competition in life, in the current scenario, but also provides an overall growth of the being. Group has well furnished Hostels, fully air-conditioned cafeteria and its own fleet of buses for the students and staff from various locations.

## *CLR Multispeciality Hospital*

**In addition, Group has 120 Bedded Hospital named as Chaudhary Lekh Raj Multispeciality General Hospital (CLRMGH) in the Campus with 24 Hours medical facilities,**





# COURSES

## ENGINEERING

### M.TECH

Electrical (Power System)  
Electronics & Comm.  
Computer Science  
Mechanical (Mfg. Process)

### B.TECH

Civil  
Electrical  
Electronics & Comm.  
Computer Science  
Mechanical

### POLYTECHNIC

Civil  
Electrical  
Electronics & Comm.  
Computer Science  
Mechanical  
Automobile

## MANAGEMENT

### MBA

Human Resource  
Marketing  
International Business  
Finance  
Information Technology

### BBA

## EDUCATION

**B.Ed. : Bachelor of Education**

## MEDICAL

### DENTAL

B.D.S.  
Bachelor of Dental Surgery

### NURSING

B.Sc. - Bachelor of Sciences  
G.N.M. - General Nursing & Midwifery  
ANM - Auxiliary Nursing Midwifery

## UPCOMING COURSES:

■ MBBS

■ Post Basic Nursing

■ M.Sc.(Nursing)

■ BCA (Cloud Computing & Information Security)



# Approvals & Affiliations



## ENGINEERING

M.Tech, B.Tech & Diploma Courses are approved by All India Council for Technical Education(AICTE). M.Tech & B.Tech Courses are affiliated to 58 Years Old NAAC Accredited “A” Grade Kurukshetra University, Kurukshetra. Diploma Courses are affiliated to Haryana State Board of Technical Education (HSBTE), Panchkula.

## MANAGEMENT

MBA Course is approved by All India Council for Technical Education (AICTE) & BBA is approved by Kurukshetra University. Both MBA & BBA are affiliated to 58 Years Old NAAC Accredited “A” Grade Kurukshetra University, Kurukshetra.

## EDUCATION

B.Ed. Course is approved by National Council of Teacher Education (NCTE) & is affiliated to NAAC Accredited “A” Grade Kurukshetra University.



## DENTAL - B.D.S

Approved by Dental Council of India and is affiliated to Pt. B. D. Sharma University of Health Sciences, Rohtak (Haryana)

## NURSING - B.Sc.

Approved by Indian Nursing Council, New Delhi and is affiliated to Pt. B. D. Sharma University of Health Sciences, Rohtak (Haryana).

## NURSING - GNM & ANM

Approved by Indian Nursing Council, New Delhi and is affiliated to DMER, Panchkula & Haryana Nurses Registration Council, Chandigarh.



## DEPARTMENT OF APPLIED SCIENCES

The foundation of Engineering Courses is based on the concept of Applied Sciences and Mathematics. All the students of B.Tech Courses are exposed to basic fundamentals in the Applied Sciences Department. During the first year, students learn the basics of Applied Mathematics, Physics and Chemistry as applicable to the study of Engineering and then apply them to solve the Engineering problems. English & Communication Skills, Bio-technology, Economics, Management and Environmental Sciences are also taught to them. The Department of Applied Sciences has well equipped Physics and Chemistry Labs.





## DEPARTMENT OF COMPUTER SCIENCE

The aim of the department is to produce quality Computer Engineers to fulfil demand of skilled talent in IT sector. The department promises to go ahead with the challenge and to create environment in tune and keeping pace with the change in the world.

The Computer Science & Engineering Department develops competencies in Computer Hardware/ Software, Programming languages, Networking, Algorithm Design and Operating Systems by imparting knowledge & skills in various theoretical, programming and mathematical subjects like Discrete Structures, SMCS, Engineering Mathematics. Skills are also developed in Programming subjects like C, OOPS, Data Structure, Algorithm Design and Java etc.





## DEPARTMENT OF ELECTRONICS & COMMUNICATION

The Electronics & Communication Engineering Department inculcates knowledge and practical skills in the subject of Data Structures, Computational Techniques, Analog / Digital Electronics, Network Analysis & Synthesis, Micro-Electronics, Control System Engineering, VHDL & Digital Design, Embedded System Design, VLSI Design, Microprocessors & Interfacing, Micro-controllers, Advanced Microprocessors, Analog Communication, Signals & Systems, Antenna & Wave Propagation, Information Theory & Coding, Digital Signal Processing, Digital Communication, Optical Communication, Microwave Engineering, Television Engineering, Wireless & Mobile Communication, Radar Engineering & Multimedia Communication.





## DEPARTMENT OF ELECTRICAL ENGINEERING

YAMUNA INSTITUTE OF ENGINEERING & TECHNOLOGY

The Electrical Engineering students develop competencies in the main fields of Power systems, Control systems, Power electronics and drives and Instrumentation through study of subjects e.g. Electrical Machines, Electrical Machine Design, Measurements and Instrumentation, Transmission and Distribution, Network analysis, High Voltage Engineering, Utilization of Electrical Energy, Control system, Power generation and Control, Power Electronics, Micro Processor, Micro-controller, Signals and systems, Digital Electronics, Digital Signal Processing, Analog Electronics, Communication Systems, Computer methods in Power systems, Electrical engineering materials, Field and waves, Advanced Mathematics, Operational Research and Advanced Programming.





## DEPARTMENT OF MECHANICAL ENGINEERING

The Department of Mechanical Engineering is one of the finest departments of the Institution, which is dedicated to the Creation, Integration, Transfer and Application of knowledge relevant to Mechanical Engineering. It provides a stimulating environment for the free development and exchange of ideas, particularly in areas of interdisciplinary Research. Mechanical graduates can choose a career in Automation, Production, Computer Integrated Manufacturing (CIM), Computer Aided Design (CAD), Computer Aided Manufacturing (CAM), Finite Element Analysis (FEA), Robotics, Refineries and Automobiles manufacturing Industries. State-of-the-art facilities hone their professional acumen.





## DEPARTMENT OF CIVIL ENGINEERING

Civil Engineering is considered to be the most versatile branch among all the Engineering branches. It can be considered as a single largest branch among all the Engineering Branches. The primary objective of this program is to produce well-balanced Civil Engineering capable of entering the Civil Engineering profession or continuing their studies at the post graduate level. Civil Engineering Graduate will be well prepared to solve current Civil Engineering problems, and they will have the ability to adapt to problems of the future. The achievements of Civil Engineers are well –known to the general public, because Civil Engineers build the world’s infrastructure. In doing so, they can shape the history of nations.





## MASTER OF BUSINESS ADMINISTRATION (MBA)

The MBA Programme offered at YIET is a two –year full-time post graduate course. It equips the students with effective skills, knowledge and strategic perspectives essential for leadership in business around the world. The programme is designed to provide both a portfolio of strong functional skills and the ability to apply, adapt and integrate those skills in different management settings. During the course, the candidates obtain a broad perspective on the nuances of managing at a time of great change and acquire skills to lead teams and organizations to success in a globalized competitive business environment.





## BACHELOR OF BUSINESS ADMINISTRATION (BBA)

BBA is an exciting and innovative regular three year full time course. Students get an opportunity to gain a wide exposure, invaluable experience and practical knowledge during this course.

Throughout the course, the learners acquire a holistic approach to learning through industry visits, guest lectures, seminars and workshops. The undergraduate students are nurtured at an early age to become ethically responsible global managers of tomorrow.

The increasing demand of managers and executives has made BBA (Bachelor in Business Administration) one of the most popular degree courses among the youth.



# YAMUNA POLYTECHNIC FOR ENGINEERING

Yamuna Polytechnic for Engineering has been set up with an idea of not just imparting technical knowhow with hands on training to the students after matric but also for ensuring their personal ,social and moral growth ,thus providing them with a competitive edge in this era of rapid industrial growth. To keep up with changing industrial environment,we need to produce engineering diploma holders with high level of skill.The institute has state-of-the-art infrastructure with modern equipments and facilities. Excellent facilities have been established such as fully air conditioned computer lab, library,class rooms and laboratories.







## CIVIL ENGINEERING

Diploma in Civil Engineering includes the design and construction of roads, bridges, railways and buildings. Civil Engineers learn planning and designing a project and getting it constructed to the required scale.

**CAREER OPTIONS:** Employment opportunities for civil engineers exist in the public and private sectors in large numbers in all branches of design, construction, & maintenance as well as building of roads and the market place. They are also involved in synchronizing traffic lights, designing houses, building bridges, erecting industrial facilities and constructing recycling plants.



## ELECTRICAL ENGINEERING

The fundamental concept of electrical engineering includes circuit theory, electrical & electronic devices and communication systems. From household to industrial plants, communications and satellite navigation system, electronic equipments, computers etc., all require electricity. Electrical engineering thus deals with the study and application of electrical systems for use in different environments.

**CAREER OPTIONS :** Electrical Diploma Engineers are required in all the manufacturing units and all the major companies in public and private sector. Electricity boards, large scale industries, manufacturing plants, power corporations, hydroelectricity sector are constantly in need of Electrical Engineers for their projects.



## MECHANICAL ENGINEERING

Mechanical Engineering is an engineering discipline that involves the application of the principles of physics for analysis, design, manufacturing and maintenance system. Mechanical engineers work to improve the design, safety and energy efficiency of the machines that support industry and society.

**CAREER OPTIONS:** Mechanical engineering graduates have promising career prospects in many industries including power generation, mining, mineral processing, metal and material production, automobile, shipping, power plants, railways, air conditioning and refrigeration, material handling and manufacturing.

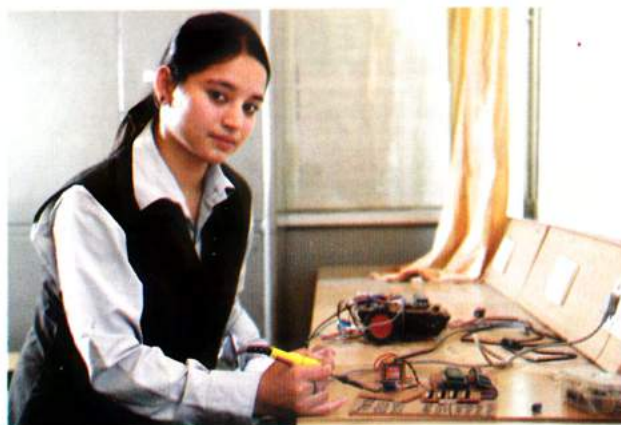




## COMPUTER SCIENCE ENGINEERING

Computer Science involves the study of information and computation along with their implementation and application in computer system. It is a major part of Information & Communication Technology, which is bringing revolutionary changes in our social set up, entertainment system and industrial applications. The Department of CSE aims at providing education in data processing, computer communications, network, programming languages, multimedia, microprocessors, peripheral interface design, artificial intelligence, simulation ERP and software tools.

**CAREER OPTION :** Software industry; Hardware industry and all other industries.



## ELECTRONICS & COMMUNICATION ENGG.

Electronics and Communication Engineering is the study of transmitting, processing and receiving of information through electronic devices. ECE is one of the most popular branches of Engineering using the technology of Information and Communication (ICE) sector to bring about radical changes in the field of communication, entertainment and human relationships. The curriculum of ECE course is well designed to provide a sound base in electrical science, circuit and network technology, signal processing, power embedded technology MSI, LSI, VLSI, satellite communication, fiber optics etc.

**CAREER OPTION :** Manufacturing and marketing of Electronic Systems & Devices.



## AUTOMOBILE ENGINEERING

Automobile Engineering trains students in designing, developing, manufacturing and repairing of automobiles. The demand for automobile engineering is growing with the expansion of automobile industries and growing demand of vehicles. Increasing concern for pollution and fuel efficiency has set standards of quality for example, making the vehicle Euro-efficient. The course curriculum is designed to teach students all aspects of design, construction, repair and maintenance of vehicles.

**CAREER OPTION :** Manufacturing, assembly & marketing etc.





## YAMUNA INSTITUTE OF EDUCATION - YIE

Yamuna Institute of Education offers a two year regular B.Ed. course approved by the National Council of Teacher Education (NCTE) & affiliated to Kurukshetra University, Kurukshetra. The college aims to play a crucial role in ensuring a sustainable development and pursuing excellence in the area of teacher education of the country. YIE is preparing professionally competent teachers who can take on the challenges of today's changing realities in schools and meet the growing expectations of young learners, parents and society.

Yamuna Institute of Education has state-of-the-art infrastructural facilities including labs, library, internet, hostels and transport facilities etc. supported by qualified and highly experienced research oriented teaching faculty to produce result oriented, dedicated, skilled, emotionally balanced and academically sound teachers and teacher educators to cater to the needs of the society as well as the nation. Moreover, at YIE, we provide a healthy learning environment to encourage independent thinking as well as application based innovative learning.





## YAMUNA INSTITUTE OF DENTAL SCIENCE & RESEARCH - YIDSR

Yamuna Institute of Dental Sciences and Research has acquired unique reputation for imparting world class dental education through a team of dedicated, highly qualified and experienced faculty. We create innovative thinking in dental students so that they should become highly competent and compassionate for dental treatment of the patients. The Institute aims to promote safe and caring environment where students can develop love and desire to learn.

**INFRASTRUCTURE :** The institution has excellent infrastructure with more than 200 dental chairs and latest state-of-the-art dental equipment. All the latest dental materials for clinical procedures are available for undergraduate training programmes. Air conditioned lecture halls with the latest audio-visual aids, phantom head labs for pre-clinical and seminar/CDE rooms are some of the facilities available in the institute. The central library of the Institute has a good collection of about 3300 text/reference books, 35 journals and demonstrative atlas volumes.



## DEPARTMENTS

- **Prosthodontics**
- **Oral and Maxillofacial Surgery**
- **Orthodontics Dentofacial Orthopedics**
- **Pedodontics Preventive Dentistry**
- **Periodontology and Oral Implantology**
- **Public and Community Dentistry**
- **Paedodontics**
- **Conservative Dentistry**
- **Oral Pathology & Microbiology**







## B.Sc. - Nursing

**BASIC NURSING DEMONSTRATION LAB :** Fully equipped with articles for basic procedures in Nursing like BP Apparatus, Oxygen Cylinder, bedpan, Urinals, Feeding Cup, Hot water bottles and other rubber goods and linen, a well established Nutrition lab. Good facilities for Midwifery procedure etc.

**CLINICAL TEACHING :** Supervised clinical teaching facilities are provided in CLR Multispeciality Hospital like general surgery, medicines, Orthopedic Surgery, Neurology, Cardiology, Radiology, Plastic Surgery, Obstetrics Gyane OT, CCU, ICU, Emergency, Physiotherapy, Rehabilitation OPD, Community medicine, Dentistry, Mobile Van for Dental Care etc.

**FIELD OF TRAINING :** Nursing institute has its own transport facilities having excellent provision for urban and rural training of the students.





## GNM & ANM

General Nursing & Midwifery  
and Auxiliary Nursing & Midwifery

### PHILOSOPHY

- We the Management and Faculty believe that Education for all is the essence of life.
- We believe that service to mankind is the service to god.
- We recognize that the Rural & Urban health services ultimately contribute for the development of the Nation.
- We strongly feel programme is needed to produce Quality Nurses and for Quality health care.
- We understand that education particularly Nursing Education helps in producing good citizens.



### LABS

- Fundamentals of Nursing lab
- Maternal and Child Health Lab

- Nutrition Lab
- Community Health Lab

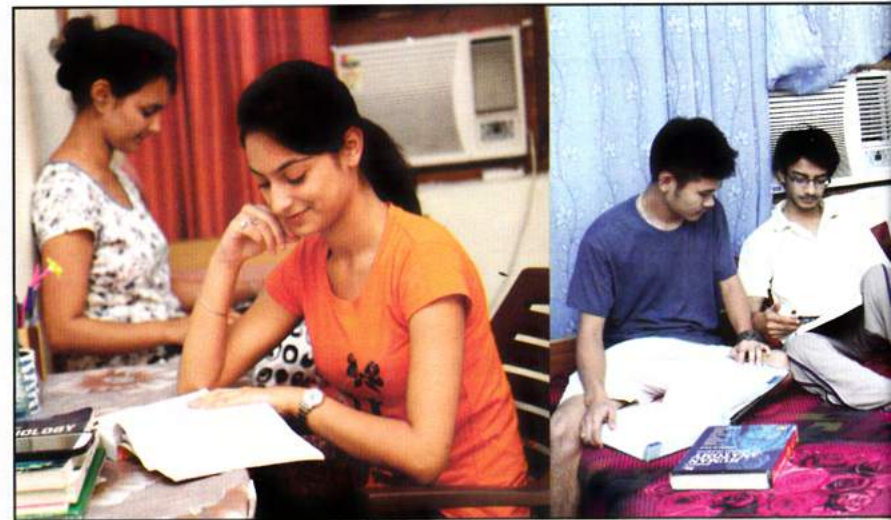
- Anatomy & Physiology Lab
- Computer Lab



## FACILITIES

### HOSTELS

The group offers separate magnificent hostels for boys and girls with hostel warden in each hostel to supervise the functioning on day to day basis. We understand that most of our students are moving away from home for the first time, so we strive to make the transition as smooth as possible by offering comfortable and safe hostels within the campus, providing a homely atmosphere. All the rooms are quite spacious fitted with air coolers. Air conditioning of some of the hostel rooms can be provided on specific request.



### CAFETERIA

In order to satisfy the need of the students for a broad variety of snacks and food items the break after a day's hard work, the institute campus is provided with a relaxing and comfortable fully air conditioned Cafeteria. The Cafeteria not only offer the students mouth watering dishes but is also a place where students gather to discuss their new experiences in the campus. Healthy and hygienic meals are made in the college canteen by a professionally managed catering company. This is place to rejuvenate the tired spirits through lip smacking delicacies. The cafeteria services are available round the clock with a smile at highly reasonable prices.

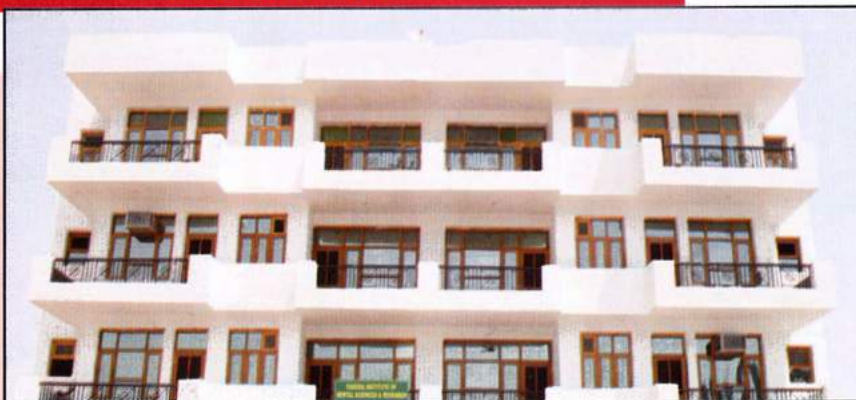
### GYMNASIUM

Well equipped and well laid out international standard Gyms separately for male & female students and staff in an area of 2400 sq.ft are available in the campus. Keeping in view the specific needs of the Weight lifters, Body builders and Fitness seekers, all sophisticated equipments designed scientifically for the above purpose are made procured and installed.





## FACILITIES



### STAFF ACCOMMODATION

Staff Quarters have been built for accommodation of outstation senior faculty so that more intimate interaction between students and staff can take place.



### TRANSPORTATION

YGI has its own fleet of buses for bringing students and staff from nearby places. The buses are also used for weekly visit of hostel students to the Yamunanagar City and for industrial visit of the students.



### IN CAMPUS BANK & ATM

The YGI has a branch of Oriental Bank of Commerce in its premises, which is very helpful to the students and staff for money transactions. In addition to this one ATM from OBC, Yamunanagar is available round the clock in the YGI Campus.



### CONFERENCE HALLS / LECTURE THEATERS

Each institute in YGI has its own Conference Hall for Guest Lectures, Seminars and other programmes. Conference Hall and Lecture Theaters are fully Air-Conditioned and fitted with Audio visual facilities.





## CLR MULTI SPECIALTY HOSPITAL (120 BEDDED)

Ch.Lekh Raj Educational & Charitable Trust has its own Multi Specialty General Hospital in name of Ch.Lekh Raj Multispecialty General Hospital (ISO 9001 Certified). The four storey hospital has been constructed over 80,000 sq ft area.

CLR Hospital has its OPD complex with the departments of Medicine, Surgery, Obstetrics and gynecology, Ophthalmology, ENT, Radiology, Orthopaedics, Pediatrics and Pathology Laboratory.

The following facilities with the latest state of art equipment are being provided by the CLR Hospital:

- A. 24 hours emergency services
- B. Fully equipped ICU with critical care facilities

Besides above, round the clock ambulances fully equipped with life saving measures are available.



We value the difference and diversity in learners as the vital part of their uniqueness which is conducive to the environment of learning. Yamuna Group of Institutions attract a large number of students specially from North-east and other parts of country. Yamuna Group of Institutions is the favourite destination for the students from neighbouring countries like Nepal & Bhutan.





# - Shooting Range



Expert Coaches from India  
& Abroad.



High quality air rifle and pistol  
are available for practice.



The complex provides standard level infrastructure that is required to prepare a shooter to meet the modern day challenges. The academy prides itself in providing all tools to build a champion. We train out studens to compete in State, Zonal, nation and international tournament by providing them with able and standard training. Our Academy plan our shooters training and assist them for all competition from District level to higher level in India and provide them better platform to learn and play in all type of shooting environment.

## NCC ACTIVITIES





# Physical Education &



## SPORTS AT YGI

*A Healthy Mind Resides in a Healthy Body*

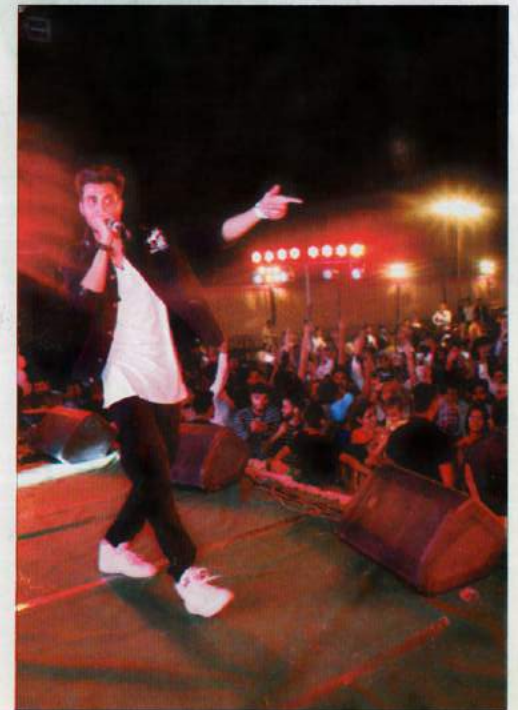
As a part of its commitment for the well rounded personality, YGI has always supported sports and encouraged sporting talent. YGI provides ample space and resources for sports activities.

Whether you are a talented athlete or new to it all, there is fun to be part of sports. Football, volleyball, basketball, billiards, table tennis, cricket, hockey and many more are offered to all students, who want to engage in sport's fun.





# Celebrating Cultural Life





## TRAINING & PLACEMENT



The placement of the students has always been on the top priority of the institutions managed by this Yamuna Group. The Group has an independent centralized Training and Placement Cell, having a dynamic team of young professionals, to organize and manage the training & placement of the students. Special coaching by experts is arranged to improve skills required for placement like resume writing, technical communication, aptitude tests, group discussion, technical and personal interviews. The department puts untiring efforts to equip the students with versatile management traits to match core needs of the corporate world. Arranging campus placement drives round the year has become a regular feature at Yamuna Group of Institutions. The careful liaisoning and excellent placement record of YGI are the proof that we are the most preferred professional group in the region.

**The department focuses its efforts towards.**

- Conducting guest lectures • Organizing industrial visits & training • Developing personality traits for improving their employability
- Counseling and grooming the students for Placements • Gap Identification and skill development • Personality Development
- Motivational Talks • Organizing Guest Lectures and Industrial Visits • Summer Training • Pre Placement Talks
- Industrial tie-up's





## OUR TYPICAL RECRUITERS





## COURSE-WISE ADMISSION

COURSE	DURATION	ELIGIBILITY & ADMISSION PROCEDURE
<b>M.Tech</b>	<b>2 Years</b>	<ul style="list-style-type: none"> <li>• Bachelor's Degree or equivalent in the relevant discipline.</li> <li>• Obtained at least 50% marks (47.5% in case of candidate belonging to SC Category) in qualifying examination.</li> </ul> <p>Admission in the M.Tech Courses will be made on the basis of the Merit of the Entrance Examination Conducted by the university as authorized by the Haryana Government followed by the counselling to be conducted by the concerned University. The left over seats are to be filled at institute level on the basis of the merit of Entrance Test / Qualifying Examination.</p>
<b>B.Tech</b>	<b>4 Years</b>	<p>Passed 10+2 examination from recognized board/university with Physics &amp; Mathematics as compulsory subjects with one of Chemistry/ Biotechnology/Computer Science/Biology and should have obtained atleast 45% marks (42.75% in case of candidates belonging to SC Category) in the above subjects taken together.</p> <p>Admission in the first year B.Tech Courses will be made on the basis of the combined merit of the entrance examination [40% weightage of Inter se merit of JEE (mains)] and 10+2 examination (60% weightage).</p> <ol style="list-style-type: none"> <li>1. 75% of the sanctioned intake of Admission will be made through online / off campus counselling by Haryana State Technical Education Society, as per schedule notified by HSTES.</li> <li>2. 25% seats will be filled by the Management on the basis of JEE (mains) merit / merit based on % of marks (PCM) in 10+2.</li> </ol>
<b>B.Tech (LEET)</b>	<b>3 Years</b>	<ol style="list-style-type: none"> <li>a) Passed Diploma examination from an AICTE approved institution; with at least 45% marks (42.75% in case of candidates belonging to SC Category) in appropriate branch of Engineering/Technology.</li> <li>b) Passed B.Sc. Degree from a recognized University as defined by UGC, with at least 45% marks (42.75% in case of candidate belonging to SC Category) and passed XII standard with Mathematics as subject.</li> <li>c) Provided that in case of students belonging to B.Sc. stream, shall clear the subjects of Engineering Graphics/Engineering Drawing and Engineering Mechanics of the first Year Engineering program along with the second year subjects.</li> <li>d) Provided further that, the students belonging to B.Sc. stream shall be considered only after filling the supernumerary seats in this category with students belonging to the Diploma Stream.</li> <li>e) Provided further that students, who have passed Diploma in Engineering &amp; Technology from an AICTE approved institution for B.Sc. Degree from a recognized university as defined by UGC, shall also be eligible for admission to the first year Engineering Degree courses subject to vacancies in the first year class in case the vacancies at lateral entry are exhausted. However the admissions shall be based strictly on the eligibility criteria as mentioned in a, b and d above.</li> </ol> <p>Admission to the 2nd Year B.Tech Courses shall be made on the basis of the merit of Entrance Test examination ( i.e. inter se merit of LEET). 75% of the sanctioned seats in this category shall be filled Online / Off campus Counseling by HSTES, as scheduled. Remaining 25% of seats of this category shall be filled by the Management on the basis of merit of LEET/ Diploma or equivalent.</p>



## COURSE-WISE ADMISSION

COURSE	DURATION	ELIGIBILITY & ADMISSION PROCEDURE
<b>MBA</b>	<b>2 Years</b>	<p>Recognized Bachelor's Degree of Minimum 3 Years Duration with at least 50% marks (47.5% in case of candidate belonging to reserved category i.e. SC/ST Category) in the qualifying Examination.</p> <p>Admission in the MBA will be made on the basis of the result of the entrance examinations (i.e. inter se merit of CMAT). For 75% of the sanctioned intake, Admission will be made through Online / Off Campus counselling by Haryana State Counselling society, Haryana Technical Education Department. The management Quota seats (25% of the sanctioned intake) for MBA will be filled first as per CMAT ranking. If candidates CMAT score are not available than as per merit based on percentage marks in qualifying examination.</p>
<b>BBA</b>	<b>3 Years</b>	<p>Passed 10+2 examination from a recognized board with minimum 40% &amp; English as compulsory subject.</p> <p>Admission in the BBA will be made on the basis of marks in qualifying examination.</p>
<b>DIPLOMA</b>	<b>3 Years</b>	<p>Pass in 10th Standard / SSC examination with atleast 35% marks from a recognized board</p> <p>Admission to the first year of the 3-year Diploma course is made on the basis of entrance test called Diploma Entrance Test, conducted by the Haryana State Board of Technical Education in May / June every year . 25% seats are filled through the management quota on the basis of merit of entrance test failing which the merit of qualifying examination will be considered.</p>
<b>DIPLOMA (LEET)</b>	<b>2 Years</b>	<p>Students having passed 10+2 examination - Physics, Chemistry &amp; Mathematics/ 10+2 - Vocational / 2 Years ITI. Science vocational or +2 Science with Technical or 10th +2 years ITI with appropriate specialization in that order shall be eligible for admission to second year Diploma courses of the appropriate program.</p> <p>Admission to the second year of 3 Years Diploma Course is made on the basis of merit / ranks obtained in DET(L) conducted by Haryana State Board of Technical Education failing which the merit of qualifying examination will be considered.</p>
<b>B.Ed.</b>	<b>2 Years</b>	<p>Candidate with at least 50% marks either in the Bachelor Degree and / or in the Master's Degree.</p> <p>Note : 1) There shall be no rounding off of percentage of marks of the qualifying examination from 0.5% and above to next higher number for determining the eligibility i.e. 49.5% and above will not be rounded off to 50%.  2) 45% marks for SC/ST/Blind / physically handicapped and Visually Impaired candidates.  3) Compartmental candidates will not be allowed admission in B.Ed. (Regular Course) in any case.</p> <p>The Admission to the B.Ed. is made on the basis of marks in the Qualifying Examination and through ON-Line counseling by the authorized State University of Haryana Government.</p>



## COURSE-WISE ADMISSION

COURSE	DURATION	ELIGIBILITY & ADMISSION PROCEDURE
<b>BDS</b>	<b>4 Years + 1 Year (internship)</b>	<p>A. The candidate will attain the age of 17 years or more on 31st Dec. of admission year. The age shall be determined as per entry in the Matriculation/Higher Secondary School or its Equivalent Examination Certificate.</p> <p>B. The candidate must have passed Senior School Certificate Examination (10+2) of Board of School Education, Haryana or an examination recognized as equivalent there to with at least 50% marks in Physics, Chemistry, Biology taken together both at qualifying and AIPMT (Centre/State as the case may be) and must have passed in the subjects of Physics, Chemistry, Biology and English individually in qualifying examination.</p> <p>Note : 1) In respect of candidates belonging to Scheduled Castes/Scheduled Tribes/Backward Class marks obtained be read as 40% instead of 50% (both at qualifying and AIPMT Examinations).</p> <p>2) The candidate passing qualifying examination from National Open School shall be eligible provided they fulfil the conditions laid down at A &amp; B above.</p> <p>3) The list of the examinations recognized as equivalent to 10+2 examinations of Board of School Education, Haryana is available in the Academic Branch of the University on university website : <a href="http://www.uhsr.ac.in">www.uhsr.ac.in</a>.</p> <p>Admission against 50% seats of sanctioned intake will be made by the Pt. B.D. Sharma University of Health Sciences, Rohtak on the basis of merit of AIPMT (Centre/State as the case may be) . Admission against remaining 50% seats will be made by the Institute at their own level on merit based on rank in AIPMT as per the direction of Govt. of Haryana Deptt. of Medical Education and Research.</p>
<b>B.Sc. (NURSING)</b>	<b>4 Years</b>	<p>A. The applicant must have passed 10+2 exam of board of school education Haryana or any examination recognized as equivalent there to with Physics, Chemistry, Biology and English (PCBE) with minimum 45% in aggregate marks. Candidates with 50% or more will be preferred.</p> <p>B. Minimum Age limit: 17 years before 31st December of the year in which admission is sought.</p> <p>C. Candidate must be medically fit and medical fitness certificate shall have to be produced at the time of admission.</p> <p>The admission to B.Sc. Nursing Program is made on the basis of the CET test conducted by Pt. B.D. Sharma University of Health Sciences, Rohtak.</p> <p>The Management Quota Seats (25% of the sanctioned intake) for Nursing is filled as per the following criteria in order of preference.</p> <p>1.CET merit ranking conducted by Pt. B.D. Sharma University of Health Sciences, Rohtak.</p> <p>2.Merit based on percentage of marks in Physics, Chemistry , Biology &amp; English.</p>



## COURSE-WISE ADMISSION

COURSE	DURATION	ELIGIBILITY AND ADMISSION PROCEDURE
<b>GNM</b>	<b>3 Years</b>	<p>AGE : Minimum and Maximum age for admission will be 17 and 35 years. There is no age bar for candidates with ANM/LHV.</p> <p>EDUCATION : -</p> <ul style="list-style-type: none"> <li>• 10+2 passed preferable Science (PCB) &amp; English with aggregate of 40% marks. Candidates with 50% or more will be preferred.</li> <li>• 10+2 in Arts (Mathematics, Biotechnology, Economics, Political Science, History, Geography, Business Studies, Accountancy, Home Science, Sociology, Psychology, Philosophy) and English Core/ English Elective or Health care Science – Vocational stream only from recognized Board under CBSE / ICSE/ SSCE / HSCE or other equivalent Board with 40% marks.</li> <li>• 10+2 vocational ANM under CBSE Board or other equivalent board from the school and recognized by Indian Nursing Council (INC), New Delhi with 40% marks.</li> <li>• Registered as ANM with State Nursing Registration Council. • Student shall be medically fit. • Students qualified in 10+2 Arts or Science Examination or Health care Science – Vocational stream ONLY conducted by National Institute of Open School with 40% marks.</li> </ul> <p>The admission to GNM course will be made on the basis of merit list prepared on percentages of marks obtained in the qualifying examination. The candidate having higher marks shall be given priority.</p>
<b>ANM</b>	<b>2 Years</b>	<ul style="list-style-type: none"> <li>• The minimum age for admission shall be 17 years on or before 31st December of the year in which admission is sought.</li> <li>• The minimum educational requirements shall be 10+2 in Arts (Mathematics, Physics, Chemistry, Biology, Biotechnology, Economics, Political Science, History, Geography, Business Studies, Accountancy, Home Science, Sociology, Psychology, and Philosophy) and English Core / English Elective or Science or Health Care Science – Vocational stream only from recognized Board.</li> <li>• <b><i>Student shall be medically fit female candidate and a bonafied resident of Haryana.</i></b></li> <li>• Students qualified in 10+2 Arts or Science examination conducted by National Institute of Open School.</li> <li>• Student shall be admitted once in a year.</li> </ul> <p>The admission to ANM course will be made on the basis of merit list prepared on percentages of marks obtained in the qualifying examination. The candidate having higher marks shall be given priority.</p>



यमुना डेंटल कॉलेज के छात्रा न  
जीते बेस्ट पेपर व पोस्टर पुरस्कार



यमुनानगर

यमुना डेंटल कॉलेज गधोली के

**वार्षिकोत्सव में दिखी विभिन्न राज्यों का सभ्यता**  
 नौक डस्टीट्यूशंस गधौली में वार्षिक महोत्सव मे मेधावी छात्र-छात्राएं सम्मानित

यमुना शुद्ध जल  
मास्कर न्यूज | यमुनानगर

यमुना गुप्त ऑफ इन्स्टीट्यूट्स  
गर्हाली में वार्षिक महोत्सव का  
आयोजन किया गया। जिसमें छात्र-  
छात्राओं ने रंगारंग व सांस्कृतिक  
कार्यक्रमों पर प्रस्तुतियाँ दीं।  
कार्यक्रम का नाम इन्वोल्वेशन टू के  
18 रखा गया। जिसका मुख्य उद्देश्य  
छात्रों और नॉन टेक्निकल

कौशल को बढ़ा  
मौके पर कॉलेज व  
छात्र-छात्राओं को  
गया।

का नाम रोशन  
शुभम, नेहा,  
सुशांत को  
परस्कार दि

मुख्य अतिरिक्त  
के पुलिस  
महल पहुंचे  
यों



## ल कॉलेज फुटबॉल टूर्नामेंट शुरू

ज | वसुधैव कुटुम्बकम्

ह इन्स्टीट्यूशन में  
ए जॉनल कॉलेज  
अ आयोजन किया  
ए फाइनल समुना  
एन के डॉ. पी  
मे प्रारंभ लेख  
एई। टर्मिनेट में  
की 10 टीमां  
ए के मुख  
एन मास्ट  
एटी विनोद



मैच से पूर्व टॉस करते खिलाड़ी

3-0 से हराया, दूसरा मैच हिम कॉलेज व खालसा कॉलेज यमुना के बीच खेला गया। खालसा कॉलेज यमुनानगर ने यह मैच 6-0 से जीत लिया।  
द्वितीय दिवस का अंतिम व तीसरा मैच अ

मेस्टर और मंजुल  
नीं मिस फ़ेशर

और सभी फ्रेशर ने रैप पर अपना  
बिखरे।

फ्रेशर मंजुला, मिस इव शर्मा  
गया। यमुना नर्सिंग की प्रि  
राजिंद्र कौर ने विद्या  
शुभकामनाएं दीं।

## डेंटल चैकअप व अवेयरनेस कैंप का आयोजन



छात्रों के दांतों की जांच करते डाक्टर।

यमुनानगर, 29 जुलाई (का.प्र.): दिल्ली पब्लिक स्कूल यमुनानगर-जगाधरी प्रवक्ता के अनुसार विद्यालय में यमुना इंस्टीच्यूट ऑफ डेंटल साइंस एंड रिसर्च, गधीली, यमुनानगर की ओर से दंत चिकित्सों की टीम ने कक्षा प्री-नर्सरी से 8वीं तक के बच्चों के लिए "डेंटल चैकअप व एवेयरनेस कैंप" आयोजित की।

दी गई कमियों को दूर करने के लिए अभिभावकों को दंत चिकित्सा से संबंधित परामर्श दिया एवं आश्वासन दिया कि दांतों की जांच के साथ-साथ बच्चों के दांतों का निःशुल्क इलाज भी किया जाएगा।

इस्



गधोली के यमुना इंस्टीट्यूट में शहीद जवानों को श्रद्धांजलि देते विद्यार्थी व स्टाफ सदस्य।

संस, सरस्वती नगर : पुलवामा में आतंकी हमले में शहीद हुए वीर जवानों को यमुना इंस्टीट्यूट गधौली के विद्यार्थियों, शिक्षकों और स्टाफ ने श्रद्धांजलि दी। उन्होंने संस्था के प्रांगण में एकत्रित होकर 2 मिनट मौन रखा। इसके बाद गांव में कैडल मार्च निकाला। शहीदों की आत्मा की शांति के लिए उन्होंने जवानों की याद में प्रार्थना भी की।

## विद्यार्थियों ने विभिन्न राज्यों की संस्कृति को मंच पर उतारा

यमना ग्रुप ऑफ इंस्टिट्यूशंस में वार्षिक महोत्सव इनोविजन टूके 18 का आयोजन

अमर उजास्वा ख्युरी  
यमुनानगर।

यमुना गुप्त और इंस्टीट्यूटर्स, गणेशी में मंगलवार को वार्षिक महोत्सव इन्वेज्शन टूके 18 का आयोजन किया गया। कार्यक्रम में छात्रों के सोनियर सुचरिटेडेट ऑफ पुलिस नवजोत सिंह महल ने मुख्य अतिथि के रूप में शिरकात की। यमुना गुप्त और इंस्टीट्यूटर्स के चेयरमैन चौधरी राजेंद्र कुमार ने उन्हें स्मृति चिह्न भेंट किया।

समारोह में विद्यार्थियों ने उत्साह के साथ हिस्सा लिया और विभिन्न कार्यक्रम प्रस्तुत किए। विद्यार्थियों ने भारत के विभिन्न राज्यों की झालक प्रस्तुत की। इसके देखकर ऐसा लगा मानो संपूर्ण भारत में एक ही उत्सव मनाया जा रहा हो। कार्यक्रम को दो भागों में विभाजित कर व नीचे टेक्निकल मे और बाएं भाग। टेक्निकल भाग में ग्रुप डिस्कशन



यमुना ग्रुप में इंडस्ट्री इंटरैक्शन सेशन का आयोजन

धूम्रक धूप और इन्स्टीट्यूशनल गांव मजदूरी में कोटेक (कम्प्यूटर साइंस) विभाग के विद्यार्थियों के लिए इन्स्टीट्यूट ट्रेनिंग का आयोजन किया गया। जिसमें अकेडम्य कम्पनी को आमंत्रित किया गया। अकेडम्य कम्पनी के सी.ई.ओ. मि. टिमासु बतारा कैम्पस में आए और विद्यार्थियों के साथ अपने विचार बांटे। अकेडम्य कम्पनी एक ऐसा सोल्यूशनर बना रही है जिससे

विद्यार्थियों को कुरुक्षेत्र युनिवर्सिटी से डिग्री की सोफ्ट कपी प्राप्त होगी। विद्यार्थियों की डिग्री युनिवर्सिटी पोर्टल पर सोफ्ट कपी के रूप में उपलब्ध होगी। इस सोफ्टवेयर डावलपमेंट के लिए अनेक इच्छुक कम्पनी के सीईओ, मि. हिमांशु बतौर ने यमुना ग्रुप के सी.एस.सी विभाग के विद्यार्थियों का भी चयन किया और वो विद्यार्थी अब मि. हिमांशु बतौर के साथ सोफ्टवेयर डावलपमेंट में सहायता करेंगे तथा इस तरह उन्हें लाईव प्रोजेक्ट पर काम करने का अवसर प्राप्त होगा।



यहाँ से निकलने के बाद वे काम्पनियाँ में, नौकरी अपने इंस्टीट्यूशनस का नाम करेंगी।





# FEE STRUCTURE

## YAMUNA INSTITUTE OF NURSING

### B.Sc Nursing

Amount (In INR)

1st Year Fee	68,350/-
2nd Year Fee	66,350/-
3rd Year Fee	66,350/-
4th Year Fee	66,350/-

### GNM

Amount (In INR)

1st Year Fee	70,500/-
2nd Year Fee	53,500/-
3rd Year Fee	53,500/-

### ANM

Amount (In INR)

1st Year Fee	70,500/-
2nd Year Fee	53,500/-

Punjab National Bank  
Account No:- 000611004794  
IFS CODE :- PUNB0000610  
BRANCH :- Yamuna Nagar

## YAMUNA INSTITUTE OF ENGINEERING & TECHNOLOGY

### B.TECH / M.TECH

Amount (In INR)

Per Year Fee	73,895/-
--------------	----------

### MBA

Amount (In INR)

Per Year Fee	59,095/-
--------------	----------

### BBA

Amount (In INR)

Per Year Fee	25,385/-
--------------	----------

Punjab National Bank  
Account No:- 000611001229  
IFS CODE :- PUNB0000610  
BRANCH :- Yamuna Nagar

## YAMUNA INSTITUTE OF EDUCATION

### B.Ed.

Amount (In INR)

1st Year Fee	48,000/-
2nd Year Fee	45,000/-

Punjab National Bank  
Account No:- 000611005593  
IFS CODE :- PUNB0000610  
BRANCH :- Yamuna Nagar

## YAMUNA POLYTECHNIC FOR ENGINEERING

### DIPLOMA

Amount (In INR)

Per Year Fee	31,330/-
--------------	----------

Punjab National Bank  
Account No:- 00061131001236  
IFS CODE :- PUNB0188310  
BRANCH :- GADHOULI (Yamuna Nagar)

## YAMUNA INSTITUTE OF DENTAL SCIENCES & RESEARCH

### BDS

Amount (In INR)

Fee	2,80,000/-
University Charges	21,500/-
<b>Total Fee</b>	<b>3,01,500/-</b>
Cauton Money (Refundable)	1,00,000/-
With the increase of 5% per year	

### HOSTEL CHARGES FOR 3 SHARING Rs. 1,00,000/-

Punjab National Bank  
Account No:- 000611003155  
IFS CODE :- PUNB0000610  
BRANCH :- Yamuna Nagar

### Note:

1. At the time of Admission Registration Amount Rs.50,000/- for BDS & for other courses Rs. 10,000/- which is adjustable against tuition fee but not refundable is to be charged.
2. Uniform charges will be paid by the students.
3. Regular University/Board Examination charges will be paid by the student as applicable.
4. Prospectus charges, Anti Ragging Affidavit charges & I card charges will be paid by the student.
5. Hostel Security Rs. 2000/- (Refundable) will be charged.
6. Transport Charges as per YGI Norms.

### HOSTEL CHARGES FOR 3 SHARING Rs. 60,000/-



Educational Excellence Awarded Institutions 



**CAMPUS**

National Highway 344, village Gadholi, Near Thana Chappar, Distt.  
Yamuna Nagar, Haryana (India) Email : [admissions@yamuna.edu.in](mailto:admissions@yamuna.edu.in)

**Helpline : 7056728087, 7056713087, 7056714087,  
7056702087, 8607800087, 8295543087**